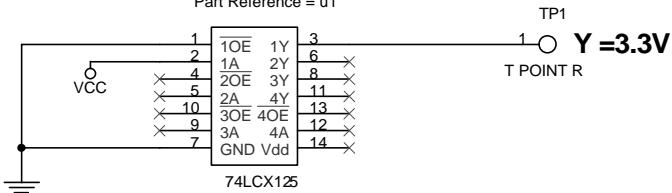


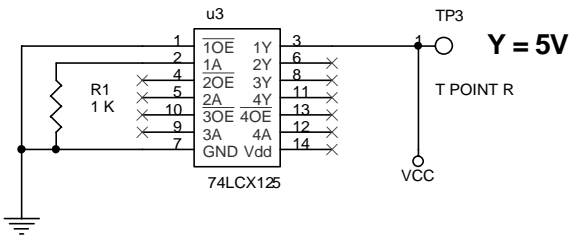
Note: VCC=5V & Vdd=3.3v

Test 1

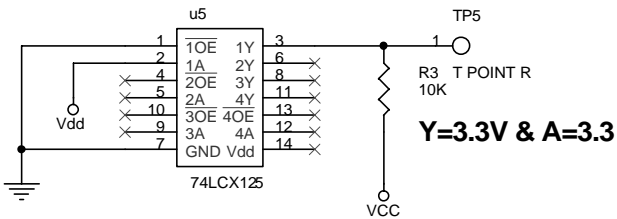
Part Reference = u1



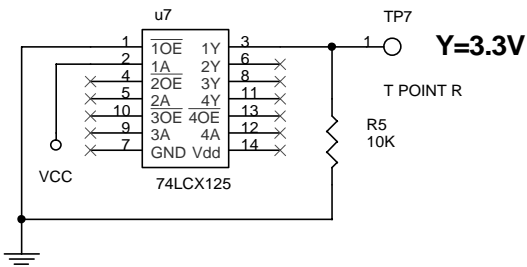
Test 3



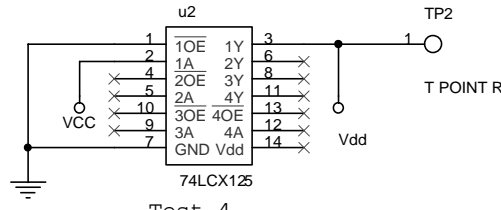
Test 5



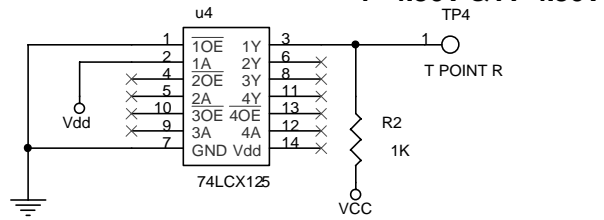
Test 7



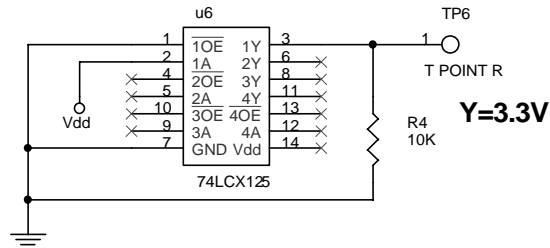
Test 2



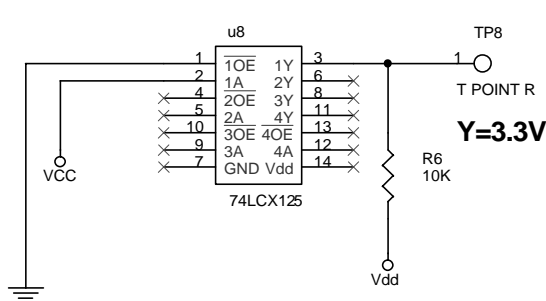
Test 4



Test 6

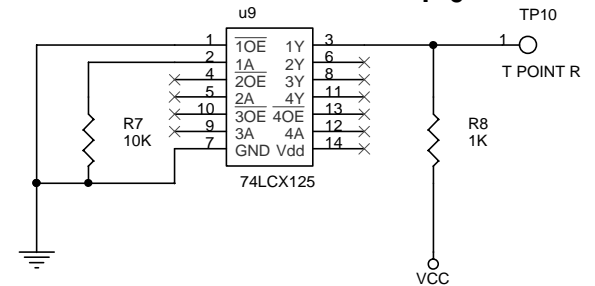


Test 8



Y= 3.3 V pendant une seconde et chute a zero  
Y= 3.3 V for 1 second then drop to zero

Test 9



- 1 L'alimentation a ete prise du programmable linear power supply
- 2 Les mesures sont faites avec le scop et le meter
- 3 les mesures sont faites a partir du TP et pin 2
4. Tests 4, 5, 6, 7, 8, 9 meme resultats avec 1K, 5K & 10K R
5. En tous cas pin 7 branche a GND et pin 14 a 3.3V

- 1 Power was a programmable linear bench supply in all cases
- 2 measurments taken with both scope and meter
- 3 Measurements at TP on Y side and Pin 2 on A side
4. Tests 4, 5, 6, 7, 8 & 9 - results same with 1K, 5K and 10K R
5. In all cases pin 7 connexcted to GND and pin 14 to 3.3V.

Zytrax INC		
Title		
Test de control/Power Tests		
Size	Document Number	Rev
A4	1	1
Date:	Monday, March 18, 2002	Sheet 1 of 1